



Forest Drive, Theydon Bois, CM16

BUTLER & STAG



A newly refurbished two bedroom house situated in the heart of Theydon Bois village.



- Newly Refurbished
- Private Garden
- Loft Room
- Two Bedroom House
- Great Location
- Good Transport Links

Accommodation comprises of a spacious living room, generous fully fitted kitchen, two bedrooms, loft room, family bathroom.

The property also benefits from a private garden and one off street parking space.

Forest Drive is a much sought after address in the ever popular village of Theydon Bois. The village is arranged around the green, complete with duck pond, and offers a parade of shops, several pubs and restaurants and easy access into Epping Forest. Transport links into London are excellent and there are several well regarded state and private schools within easy reach. Local leisure facilities include golf courses, sports centres and a tennis club.

Council Tax Band C

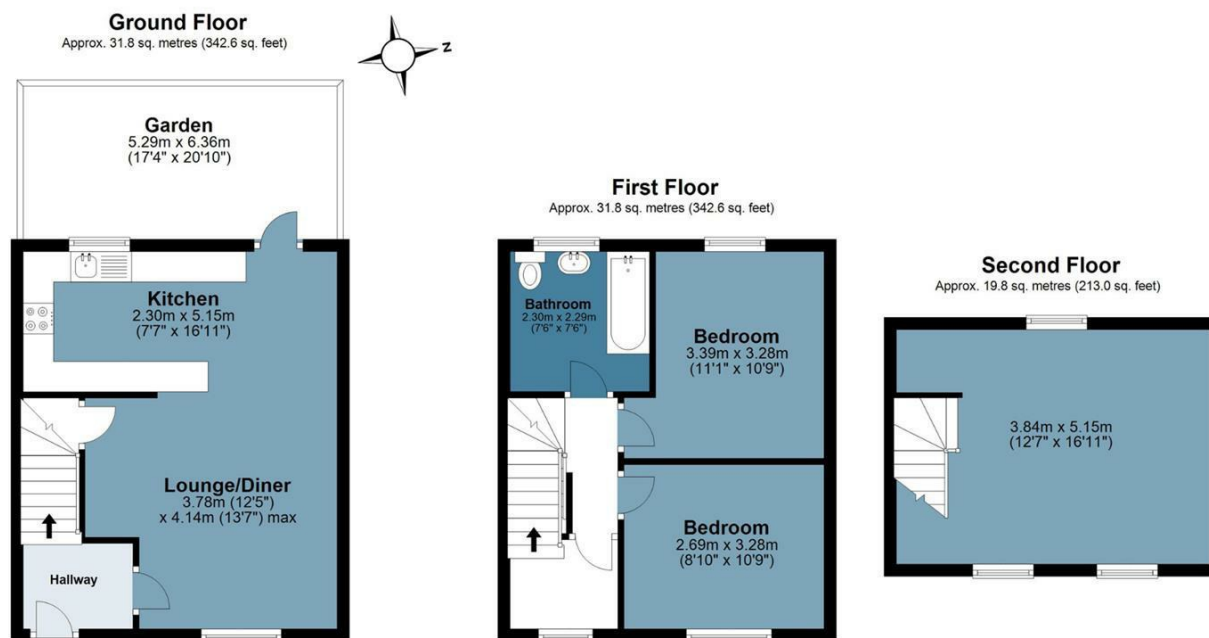




Forest Drive

Approx. Gross Internal Area 83.4 sq. metres (898.2 sq. feet)

BUTLER & STAG



Measurements are approximate and for illustration purposes only. While we do not doubt the accuracy and completeness, we advise you conduct a careful independent assessment of the property to determine monetary value
© @modephoto.uk www.modephoto.co.uk

IMPORTANT NOTICE - These particulars have been prepared in good faith and they are not intended to constitute part of an offer or contract. We have not performed a structural survey on this property and the services, appliances and specific fittings have not been tested. All photographs, measurements, floor plans and distances referred to are given as a guide and should not be relied upon.

BUTLER & STAG

☎ 01992 667666

🏠 4 Forest Drive, Theydon Bois, Essex, CM16 7EY

✉ theydon@butlerandstag.com

www.butlerandstag.uk